

# ACTIVITIES. UNIT 6: THE REPRODUCTION LEVEL 6<sup>TH</sup>

1 In your notebook, match the letters to the words.

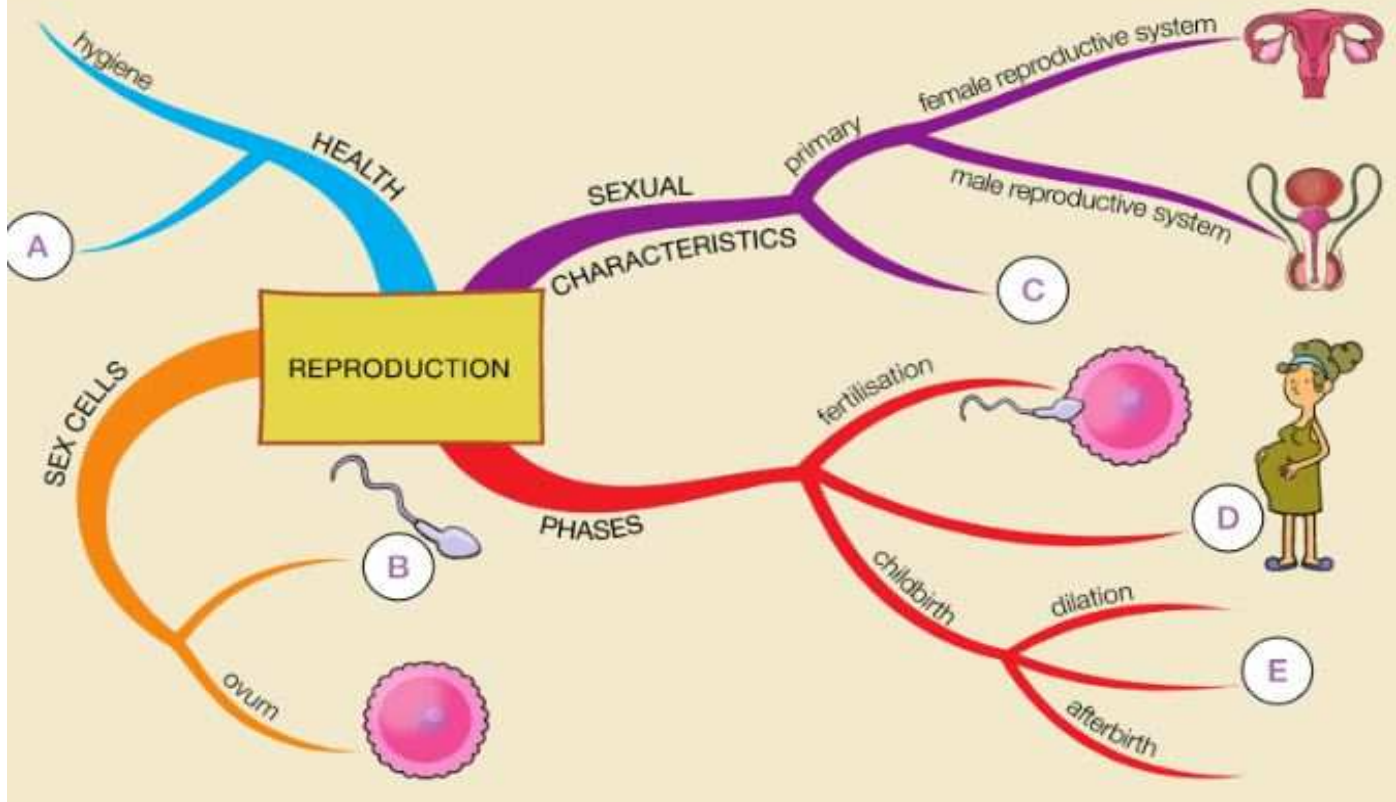
spermatozoa

secondary

prevention

birth

pregnancy



2 Copy the table in your notebook. Then add these sentences to the correct column.

- Women develop breasts and wider hips.
- Men have testes.
- Men develop a deeper voice and more facial and body hair.
- Women have ovaries.

	Primary sexual characteristic	Secondary sexual characteristic
Women	...	...
Men	...	...

3 Classify the reproductive organs as male or female in your notebook. Then write a sentence describing each one.

- prostate gland
- uterus
- fallopian tubes
- sperm ducts

4 Answer the questions.

- What is the difference between primary and secondary sexual characteristics?
- In which stage of life do secondary sexual characteristics develop? \_\_\_

5 Look at pictures A and B. In your notebook, write what each one shows.



**6 Match. Then, use the words to write sentences.**

ovaries

male sex cells

ova

testes

female sex cells

spermatozoa

• *The ovaries contain ...*

• *The testes ...*

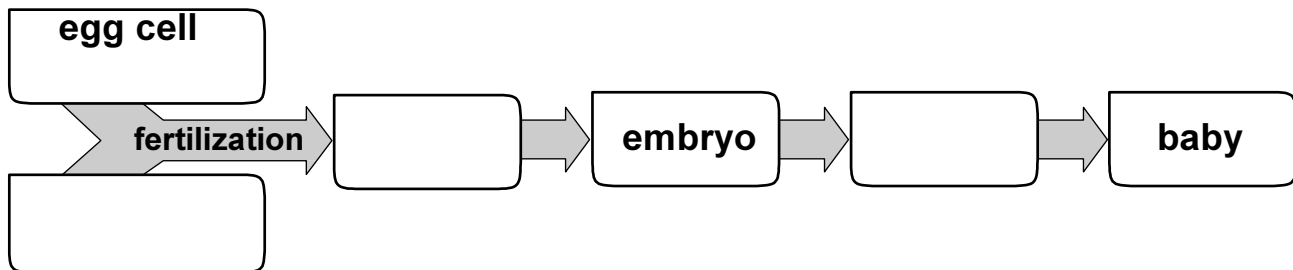
**7 Answer the questions about fertilisation in your notebook.**

- a. What is fertilisation?
- b. Where does it take place?
- c. What new cell is produced?
- d. What happens to this cell?

**8 These sentences about the process of giving birth are in the wrong order. Copy them into your notebook in the right order.**

- The placenta is expelled from the uterus.
- The baby is born.
- The mother pushes hard with her abdominal muscles to help deliver the baby.
- The opening of the uterus dilates.

**9 Complete the diagram.**



**10 Fill in the gaps:** *Secondary- physical- reproductive- primary- puberty- testes - ovaries- zygote - fertilization - childbirth – pregnancy - foetus.*

Sexual characteristics are the (...) differences that exist between men and women. They can be (...) or secondary. Primary sexual characteristics are the (...) organs. (...) sexual characteristics refer to other physical differences between men and women.

These develop during (...). Female sex cells are contained in the (...) and male sex cells are produced in the (...).

When an egg cell and a sperm cell join (...), occurs, and a (...) forms, which develops into an embryo. This embryo continues to grow and develops into a (...). This process is known as (...).

It lasts about nine months and ends with the (...)